

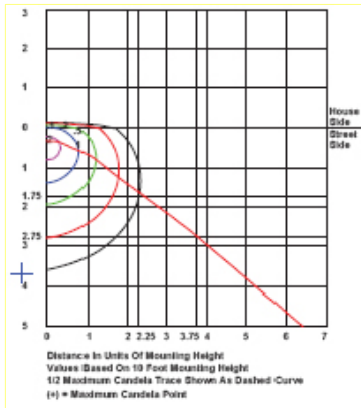


# Fixture Specification

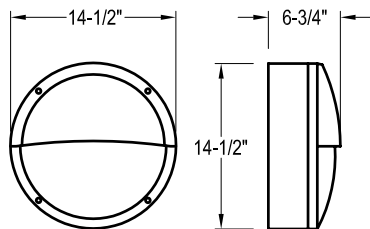
MODEL #: **CRB**

STYLE / LAMP / LAMP / WATTAGE / KELVIN / BALLAST / FINISH / LENS / ACCESSORIES / SIZE / COMPLIANCE  
QTY TYPE DETAIL

PROJECT : \_\_\_\_\_ TYPE : \_\_\_\_\_ NOTE : \_\_\_\_\_



CRB/2/TC42



**Light Source**

Type	Quad, Spiral or Triple	Triple
Wattage	26	32 42
Quantity	1/2	1/2 1/2

**Standard Features**

HOUSING	Die Cast Aluminum Mounts over Electrical Box or to Structure for Surface Conduit	FINISH	White	LENS	Opalescent Polycarbonate
LAMP	Quad, Triple, and Spiral - 2700K	ELECTRICAL	Electronic Ballast Normal Power Factor 120V/60Hz AC UL Listed Wet Location	REFLECTOR	White Powdercoated Steel

**Special options**

Please Note: Standard Features May Change if Fixtures are Ordered with Special Option(s).

BALLAST	<input type="checkbox"/> DV 120/277 <input type="checkbox"/> HPF High Power Factor <input type="checkbox"/> V 277 Volt	FINISH	<input type="checkbox"/> FBZ Bronzestone	ACCESSORIES	<input type="checkbox"/> EPC External Photocell <input type="checkbox"/> IPC Internal Photocell
KELVIN	<input type="checkbox"/> 3500K <input type="checkbox"/> 4100K	TECHNOLOGY	<input type="checkbox"/> GU24 ( Energy Star Compliant Component ) <input type="checkbox"/> LED	COMPLIANCE	<input type="checkbox"/> ES Energy Star <input type="checkbox"/> MIA Made In America

For Additional Accessories and Options Visit [www.aslighting.com](http://www.aslighting.com)

ASL  
25 Twelfth Street  
Brooklyn, NY 11215-3820

Toll Free  
Phone: 800-369-1101  
Fax: 800-552-3465

Local  
Phone: 718-369-1100  
Fax: 718-369-1105

Online  
email: [info@aslighting.com](mailto:info@aslighting.com)  
visit: [www.aslighting.com](http://www.aslighting.com)



© copyright 2008 by American Scientific Lighting Corp. All rights reserved.

**CRB**